



# THE OAKVIEW

5 BEDS | 4.5 BATHS | 7,824 SQFT | FIRST FLOOR PRIMARY SUITE

Inspired by one of Joseph Douglas Homes' most admired floor plans, The Oakview blends timeless architecture with modern luxury through dramatic rooflines, layered gables, and elegant arched details throughout. Expansive living spaces connect the kitchen, dining area, great room, and three-season room for entertaining with character, while the first-floor primary suite, sports court, simulator, fitness area, and custom sauna create an environment designed for relaxation, recreation, and a place that feels unmistakably like home.

## SPECIAL FEATURES:

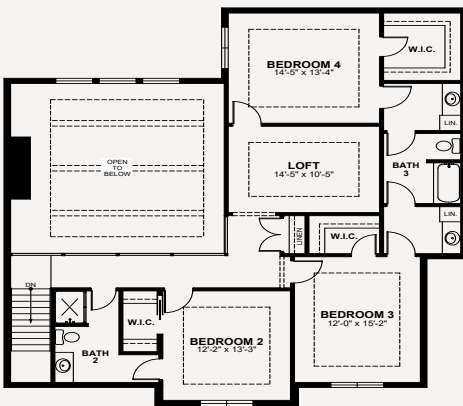
- Sports court, simulator, fitness area & sauna retreat
- Secluded study with built-in bookcases
- Decorative wood beams and a primary bedroom foyer entrance
- Spacious three-seasons room for versatile indoor-outdoor living



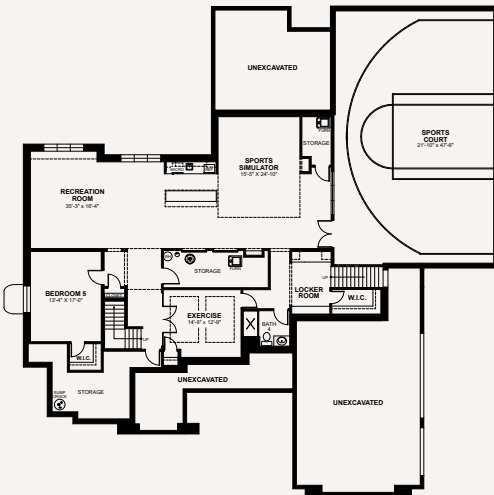
# THE OAKVIEW

5 BEDS | 4.5 BATHS | 7,824 SQFT | FIRST FLOOR PRIMARY SUITE

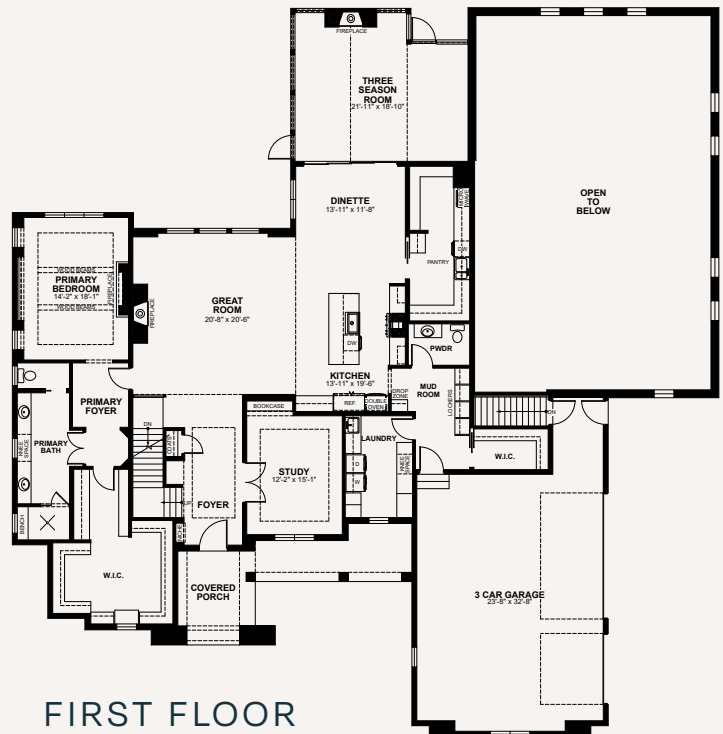
Your journey to a custom-built home begins here. The Oakview is just one example of our expertly crafted designs. Ready to personalize your dream home? Explore customization options, connect with our team, and take the next step toward bringing your vision to life.



SECOND FLOOR  
1,336 SQFT



FINISHED LOWER LEVEL  
3,780 SQFT



FIRST FLOOR  
2,708 SQFT

## A HOME THAT REFLECTS YOU

- Choose from a range of high-end finishes & layouts
- Built with care & quality materials
- Our team guides you every step of the way
- Energy-conscious design with the latest technology

