



THE CANYON VIEW

5 BEDS | 4.5 BATHS | 5,492 SQFT | FIRST FLOOR PRIMARY SUITE

Welcome to The Canyon View, where livable design meets everyday comfort in a flexible two-story layout. With five bedrooms and four-and-a-half baths, this thoughtfully crafted home features a main-floor primary suite and a spa-inspired bath for effortless relaxation. The open-concept kitchen, dining, and great room create a natural flow for entertaining, while warm wood accents and a versatile loft bring an organic, inviting feel. Whether enjoying casual evenings with friends or quiet moments with family, The Canyon View offers a down-to-earth blend of style, function, and seamless connection with the outdoors.

SPECIAL FEATURES:

- Open layout for easy everyday flow
- Spacious covered porch
- Designed for indoor/outdoor entertaining
- Expansive loft area with exposed wood accents



LET'S BUILD YOUR VISION: 262.783.4700 | JosephDouglasHomes.com
N50W13740 Overview Drive, Suite D, Menomonee Falls, WI 53051

THE CANYON VIEW

5 BEDS | 4.5 BATHS | 5,492 SQFT | FIRST FLOOR PRIMARY SUITE



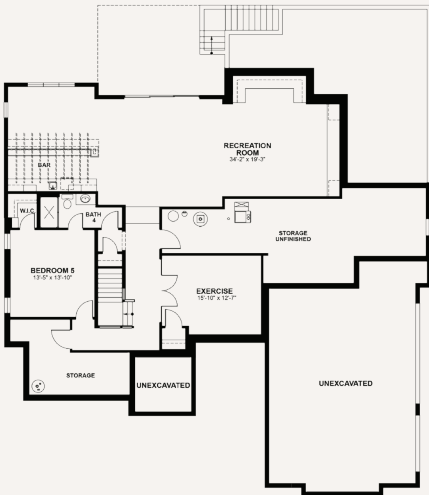
Your journey to a custom-built home begins here. The Canyon View is just one example of our expertly crafted designs. Ready to personalize your dream home? Explore customization options, connect with our team, and take the next step toward bringing your vision to life.

A HOME THAT REFLECTS YOU

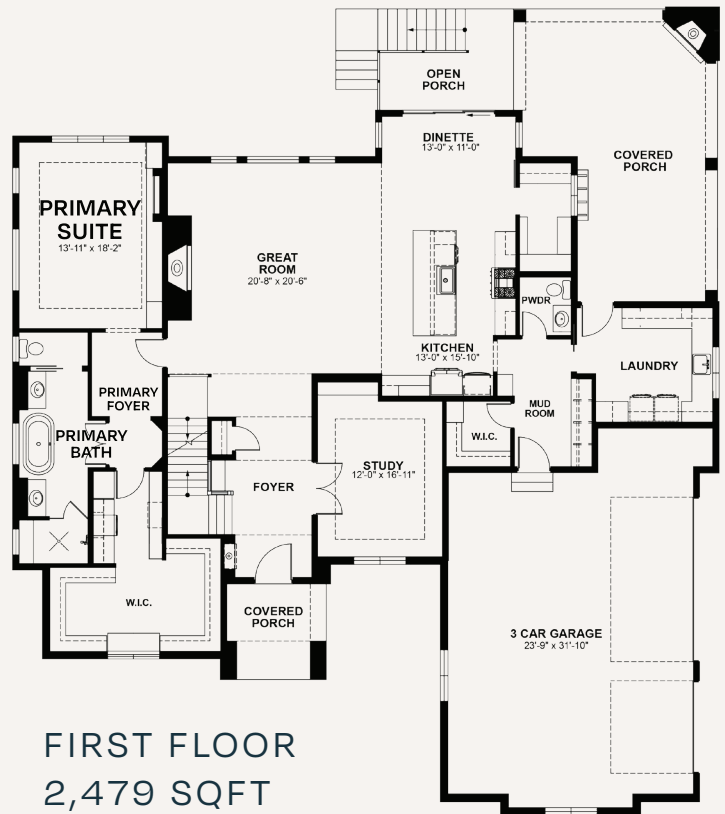
- Choose from a range of high-end finishes & layouts
- Built with care & quality materials
- Our team guides you every step of the way
- Energy-conscious design with the latest technology



SECOND FLOOR 1,282 SQFT



FINISHED LOWER LEVEL 1,731 SQFT



FIRST FLOOR 2,479 SQFT



LET'S BUILD YOUR VISION: 262.783.4700 | JosephDouglasHomes.com
N50W13740 Overview Drive, Suite D, Menomonee Falls, WI 53051