



THE BRIGHTON

3 BEDS | 2 BATHS | 2,000 SQFT | RANCH

Efficiently designed and comfortably elegant, The Brighton is a single-level home that makes the most of its 2,000 sqft. The open design of the kitchen, great room, and dinette provides a unified space perfect for gathering and everyday comfort. The spacious primary suite features a tray ceiling, large walk-in closet, and private bath, while two additional bedrooms are situated separately for privacy. Practical touches like a mudroom with a bench, a walk-in pantry, and a side-entry garage make this home as functional as it is beautiful.

SPECIAL FEATURES:

- Open-concept great room with 10' ceilings
- Spacious primary suite with tray ceiling
- Mudroom and laundry with smart storage
- Flexible garage access locations



LET'S BUILD YOUR VISION: 262.783.4700 | JosephDouglasHomes.com
N50W13740 Overview Drive, Suite D, Menomonee Falls, WI 53051

THE BRIGHTON

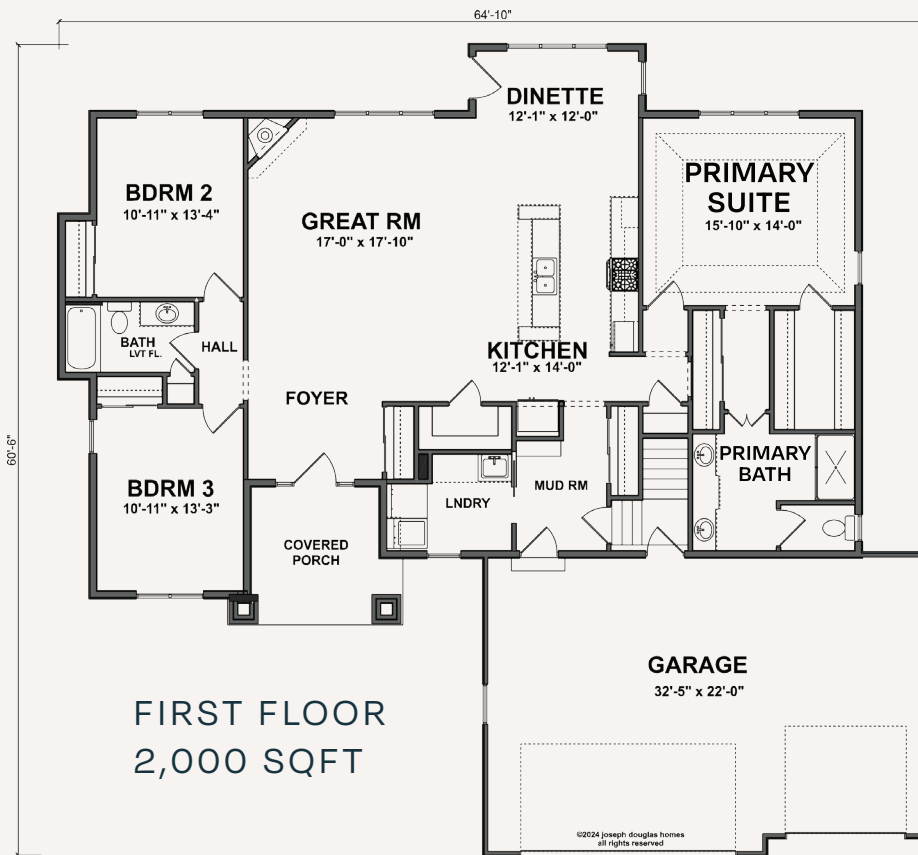
3 BEDS | 2 BATHS | 2,000 SQFT | RANCH



Your journey to a custom-built home begins here. The Brighton is just one example of our expertly crafted designs. Ready to personalize your dream home? Explore customization options, connect with our team, and take the next step toward bringing your vision to life.

A HOME THAT REFLECTS YOU

- Choose from a range of high-end finishes & layouts
- Built with care & quality materials
- Our team guides you every step of the way
- Energy-conscious design with the latest technology



LET'S BUILD YOUR VISION: 262.783.4700 | [JosephDouglasHomes.com](https://www.JosephDouglasHomes.com)
N50W13740 Overview Drive, Suite D, Menomonee Falls, WI 53051