



THE SUMMIT

4 BEDS | 3.5 BATHS | 3,500 SQFT | FIRST FLOOR PRIMARY SUITE

The Summit offers 3,500 sqft of artfully crafted living space, highlighted by a first floor primary suite, soaring great room ceilings, and flexible spaces that adapt to your lifestyle. Impressive from the moment you enter, the open-concept kitchen flows into the dinette and sunroom, creating a seamless space for daily life and entertaining. Upstairs, three additional bedrooms and two full baths provide ample space for family or guests, while an optional bonus room adds even more versatility. With abundant storage, a 3-car garage, and a welcoming front porch, The Summit balances style, comfort, and functionality in one distinctively designed home.

SPECIAL FEATURES:

- Spacious two-story foyer with vaulted ceilings
- Great room with 18' ceilings and cozy fireplace
- Flex room ideal for office, gym, or guest space
- Optional bonus room adds 340 sqft



THE SUMMIT

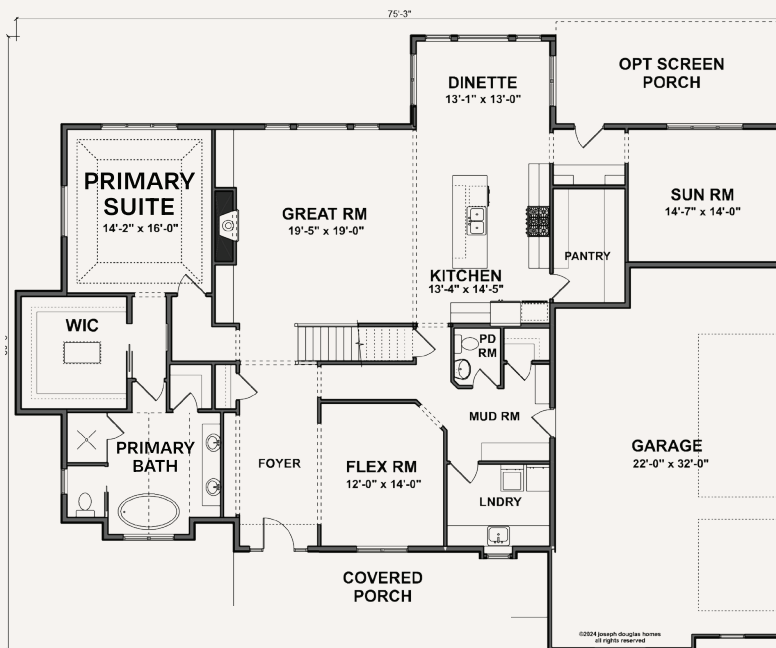
4 BEDS | 3.5 BATHS | 3,500 SQFT | FIRST FLOOR PRIMARY SUITE

Your journey to a custom-built home begins here. The Summit is just one example of our expertly crafted designs. Ready to personalize your dream home? Explore customization options, connect with our team, and take the next step toward bringing your vision to life.

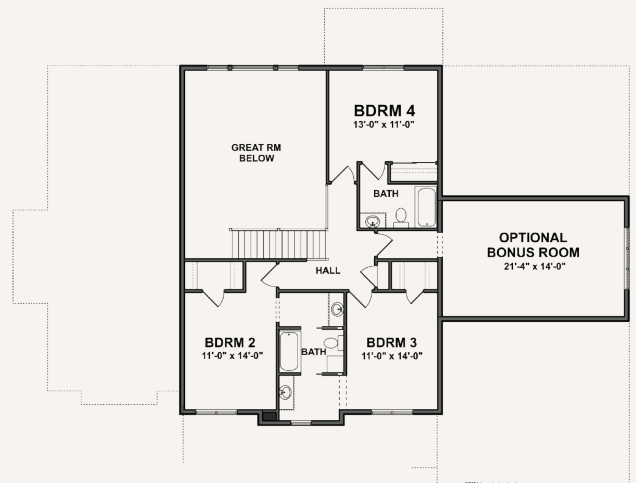


A HOME THAT REFLECTS YOU

- Choose from a range of high-end finishes & layouts
- Built with care & quality materials
- Our team guides you every step of the way
- Energy-conscious design with the latest technology



FIRST FLOOR
2,535 SQFT



SECOND FLOOR
965 SQFT



LET'S BUILD YOUR VISION: 262.783.4700 | JosephDouglasHomes.com
N50W13740 Overview Drive, Suite D, Menomonee Falls, WI 53051