



THE CANYON VIEW

4 BEDS | 3.5 BATHS | 3,138 SQFT | FIRST FLOOR PRIMARY SUITE

Welcome to The Canyon View, where convenience meets style in a flexible two-story design. Boasting four bedrooms and three-and-a-half baths, this elegant two-story home offers four spacious bedrooms, including a main-floor primary suite with a spa-like bath for ultimate relaxation. The open-concept kitchen, dining area, and great room invite warm gatherings, while a handy command center helps you stay organized. Whether you're hosting weekend get-togethers or seeking a peaceful retreat, The Canyon View delivers every comfort for today's active families.

SPECIAL FEATURES:

- Dedicated command center
- Storage-rich design
- Chef's kitchen with large island & grand pantry
- Great room with two-story ceiling



THE CANYON VIEW

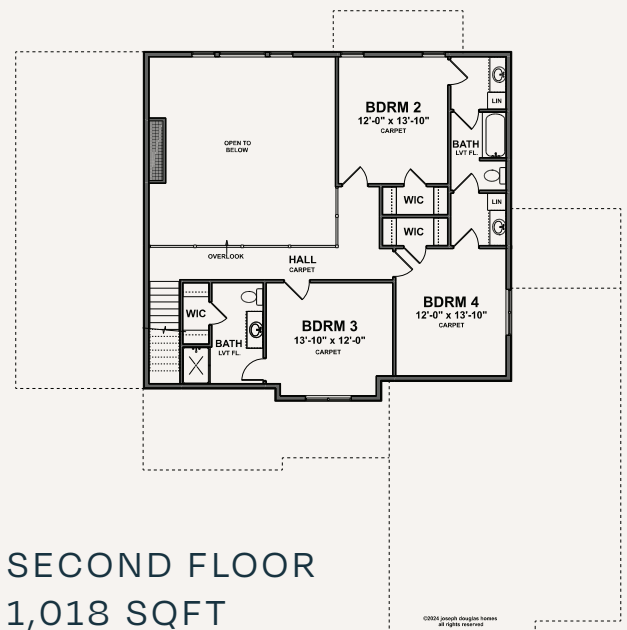
4 BEDS | 3.5 BATHS | 3,138 SQFT | FIRST FLOOR PRIMARY SUITE



Your journey to a custom-built home begins here. The Canyon View is just one example of our expertly crafted designs. Ready to personalize your dream home? Explore customization options, connect with our team, and take the next step toward bringing your vision to life.

A HOME THAT REFLECTS YOU

- Choose from a range of high-end finishes & layouts
- Built with care & quality materials
- Our team guides you every step of the way
- Energy-conscious design with the latest technology



LET'S BUILD YOUR VISION: 262.783.4700 | JosephDouglasHomes.com
N50W13740 Overview Drive, Suite D, Menomonee Falls, WI 53051