



# THE MONTANA

3 BEDS | 2.5 BATHS | 3,028 SQFT | RANCH

Experience the Montana, a beautifully designed ranch home offering refined single-level living. This modern plan features a central great room bathed in natural light from oversized windows, creating an airy and inviting atmosphere. The spacious kitchen island serves as a natural gathering point for friends and family. With two comfortable bedrooms and a flexible den space perfect for a home office or hobby room, the Montana provides a bright and open layout. Enjoy the ease of single-level living complemented by stylish design and comfortable functionality.

## SPECIAL FEATURES:

- First floor primary suite with dual walk-in closets
- Bright porch with the option to add a screened porch
- Mudroom with built-in lockers, located next to laundry area



LET'S BUILD YOUR VISION: 262.783.4700 | [JosephDouglasHomes.com](https://www.JosephDouglasHomes.com)  
N50W13740 Overview Drive, Suite D, Menomonee Falls, WI 53051

# THE MONTANA

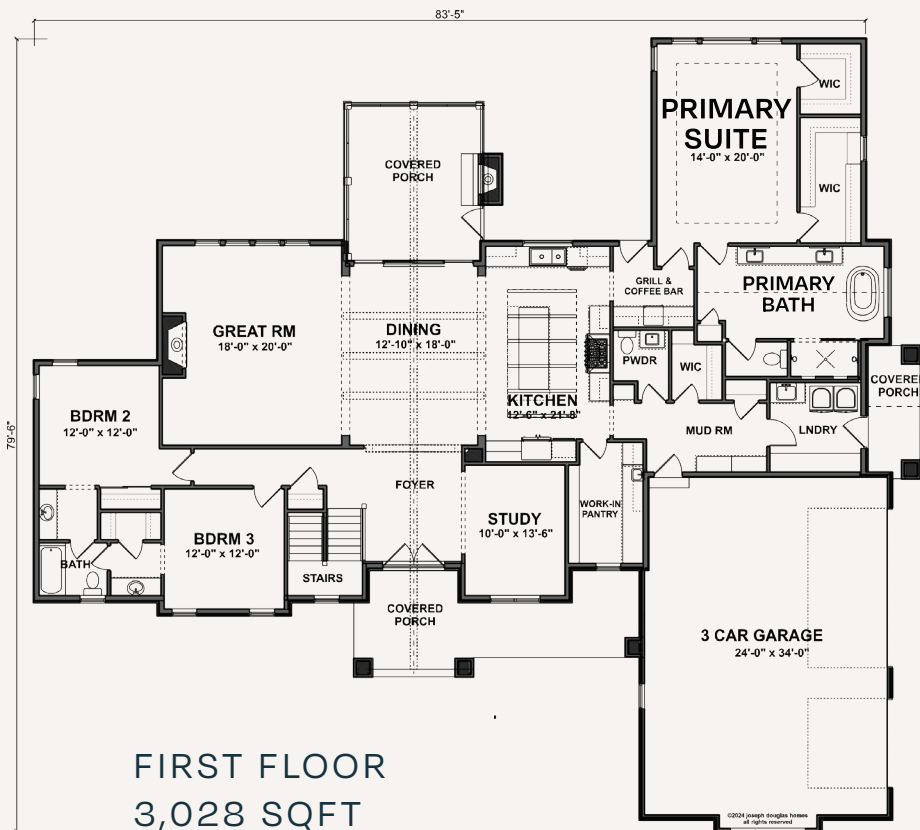
3 BEDS | 2.5 BATHS | 3,028 SQFT | RANCH



Your journey to a custom-built home begins here. The Montana is just one example of our expertly crafted designs. Ready to personalize your dream home? Explore customization options, connect with our team, and take the next step toward bringing your vision to life.

## A HOME THAT REFLECTS YOU

- Choose from a range of high-end finishes & layouts
- Built with care & quality materials
- Our team guides you every step of the way
- Energy-conscious design with the latest technology



LET'S BUILD YOUR VISION: 262.783.4700 | [JosephDouglasHomes.com](https://www.JosephDouglasHomes.com)  
N50W13740 Overview Drive, Suite D, Menomonee Falls, WI 53051