



THE CRESTWOOD

3 BEDS | 2.5 BATHS | 2,607 SQFT | SPLIT-BEDROOM RANCH

Elevate your lifestyle in this thoughtfully designed ranch. The Crestwood offers a welcoming foyer that flows seamlessly into a sunlit great room and an adjacent dining area. The kitchen's oversized island and abundant storage make hosting a breeze, while the luxurious primary suite with its custom-tiled shower and ample closet space creates a private retreat. Two additional bedrooms, a centrally located laundry room, and a covered porch provide a comfortable yet sophisticated living experience.

SPECIAL FEATURES:

- Covered porch with optional grill or coffee station
- Tray ceiling in the primary suite
- Split-bedroom layout for enhanced privacy
- Focus on energy-efficient construction & modern design



LET'S BUILD YOUR VISION: 262.783.4700 | [JosephDouglasHomes.com](https://www.JosephDouglasHomes.com)
N50W13740 Overview Drive, Suite D, Menomonee Falls, WI 53051

THE CRESTWOOD

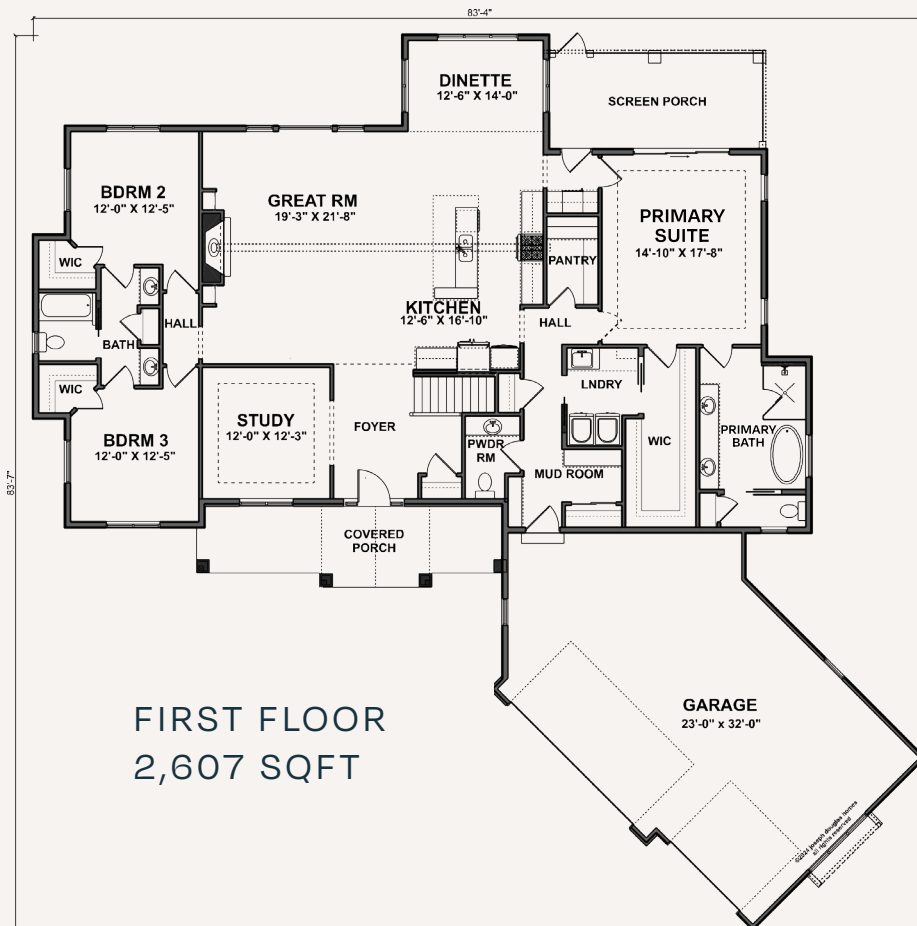
3 BEDS | 2.5 BATHS | 2,607 SQFT | SPLIT-BEDROOM RANCH



Your journey to a custom-built home begins here. The Crestwood is just one example of our expertly crafted designs. Ready to personalize your dream home? Explore customization options, connect with our team, and take the next step toward bringing your vision to life.

A HOME THAT REFLECTS YOU

- Choose from a range of high-end finishes & layouts
- Built with care & quality materials
- Our team guides you every step of the way
- Energy-conscious design with the latest technology



LET'S BUILD YOUR VISION: 262.783.4700 | JosephDouglasHomes.com
N50W13740 Overview Drive, Suite D, Menomonee Falls, WI 53051