



# THE RIVERSTONE

3 BEDS | 2.5 BATHS | 2,336 SQFT | SPLIT-BEDROOM RANCH

Discover comfort at The Riverstone, a ranch-style home offering 2,336 sqft of thoughtful design. Three bedrooms and two-and-a-half baths provide plenty of room for families or visiting guests. The heart of the home lies in the spacious great room, featuring tall ceilings and a fluid layout that merges living, dining, and kitchen areas. An optional private porch brings nature closer, while the primary suite is tucked away for comfort and tranquility. Experience elevated living where form, function, and everyday convenience unite in one elegant home.

## SPECIAL FEATURES:

- Grand 11-foot ceilings in the living area
- Airy open-concept floor plan
- Thoughtful window placement for abundant natural light
- Modern kitchen with island centerpiece & expansive walk-in pantry



LET'S BUILD YOUR VISION: 262.783.4700 | [JosephDouglasHomes.com](http://JosephDouglasHomes.com)  
N50W13740 Overview Drive, Suite D, Menomonee Falls, WI 53051

# THE RIVERSTONE

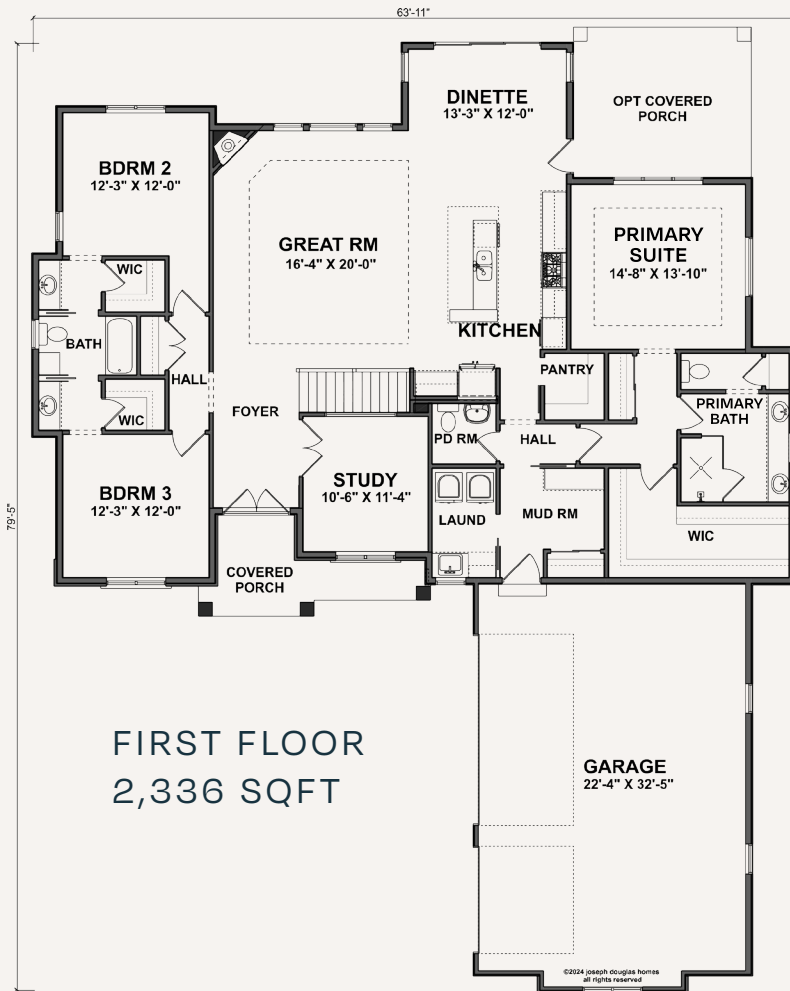
3 BEDS | 2.5 BATHS | 2,336 SQFT | SPLIT-BEDROOM RANCH



Your journey to a custom-built home begins here. The Riverstone is just one example of our expertly crafted designs. Ready to personalize your dream home? Explore customization options, connect with our team, and take the next step toward bringing your vision to life.

## A HOME THAT REFLECTS YOU

- Choose from a range of high-end finishes & layouts
- Built with care & quality materials
- Our team guides you every step of the way
- Energy-conscious design with the latest technology



LET'S BUILD YOUR VISION: 262.783.4700 | [JosephDouglasHomes.com](https://www.JosephDouglasHomes.com)  
N50W13740 Overview Drive, Suite D, Menomonee Falls, WI 53051