



# THE BELLE HAVEN

4 BEDS | 2.5 BATHS | 2,570 SQFT | FIRST FLOOR PRIMARY SUITE

Designed for comfort and style, The Belle Haven seamlessly balances sophistication with functionality. This 2,570 sqft home features an open-concept layout, soaring ceilings, and abundant natural light. A chef's kitchen with a spacious island flows seamlessly into the great room, creating an inviting space for entertaining. The primary suite serves as a tranquil retreat, complete with a spa-like bath and generous walk-in closet. Thoughtful details, including a dedicated home office and expansive lower-level potential, make this home ideal for modern living.

## SPECIAL FEATURES:

- Open-concept living with 9' ceilings & natural light
- Designer kitchen with walk-in pantry
- Spacious primary suite with spa-inspired bath
- Energy-efficient construction & smart home integration



LET'S BUILD YOUR VISION: 262.783.4700 | [JosephDouglasHomes.com](http://JosephDouglasHomes.com)  
N50W13740 Overview Drive, Suite D, Menomonee Falls, WI 53051

# THE BELLE HAVEN

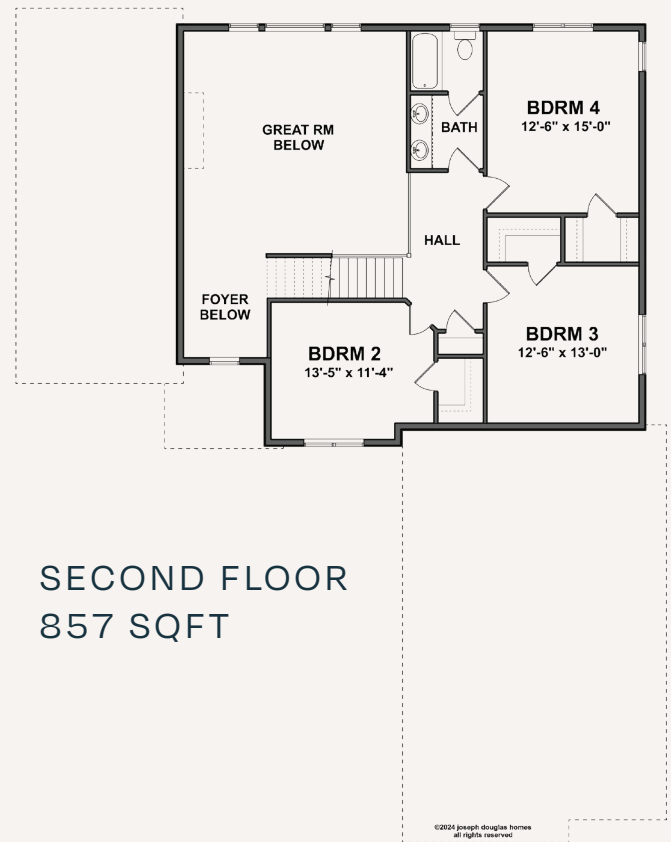
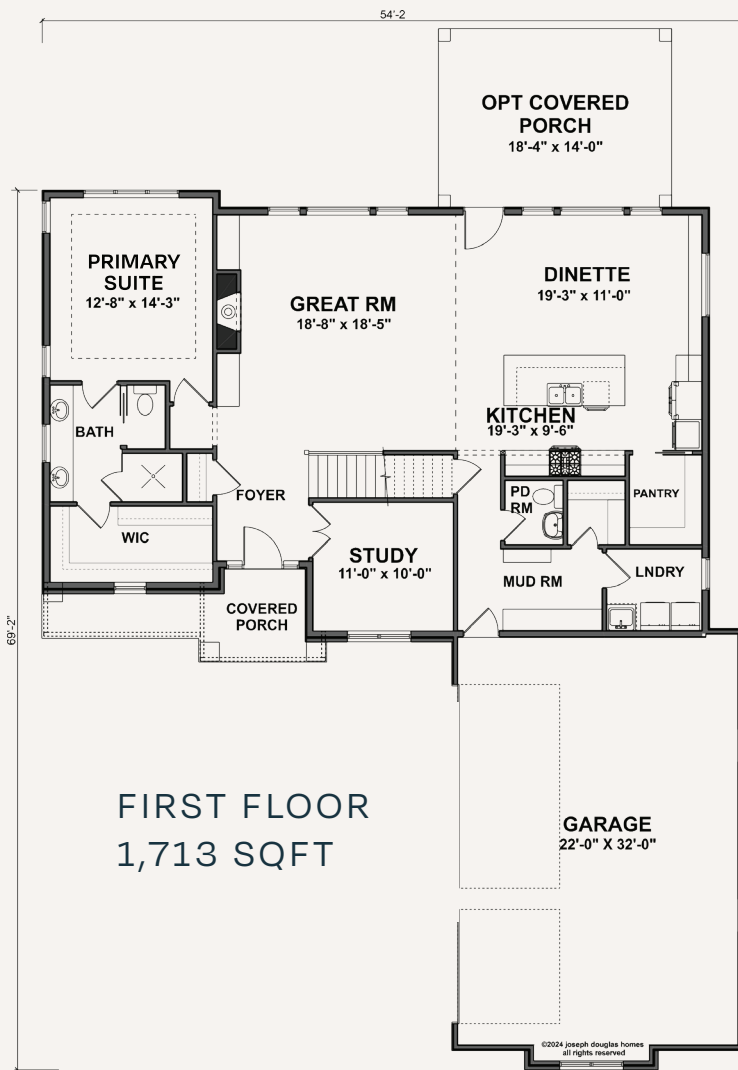
4 BEDS | 2.5 BATHS | 2,570 SQFT | FIRST FLOOR PRIMARY SUITE



Your journey to a custom-built home begins here. The Belle Haven is just one example of our expertly crafted designs. Ready to personalize your dream home? Explore customization options, connect with our team, and take the next step toward bringing your vision to life.

## A HOME THAT REFLECTS YOU

- Choose from a range of high-end finishes & layouts
- Built with care & quality materials
- Our team guides you every step of the way
- Energy-conscious design with the latest technology



LET'S BUILD YOUR VISION: 262.783.4700 | [JosephDouglasHomes.com](https://www.JosephDouglasHomes.com)  
N50W13740 Overview Drive, Suite D, Menomonee Falls, WI 53051