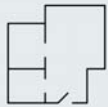


# The Crestwood



2,607 Sq.Ft.



3 BEDS



2.5 BATHS



Split Bedroom RANCH



SPECIAL FEATURES

Covered Porch  
Grill / Coffee Station

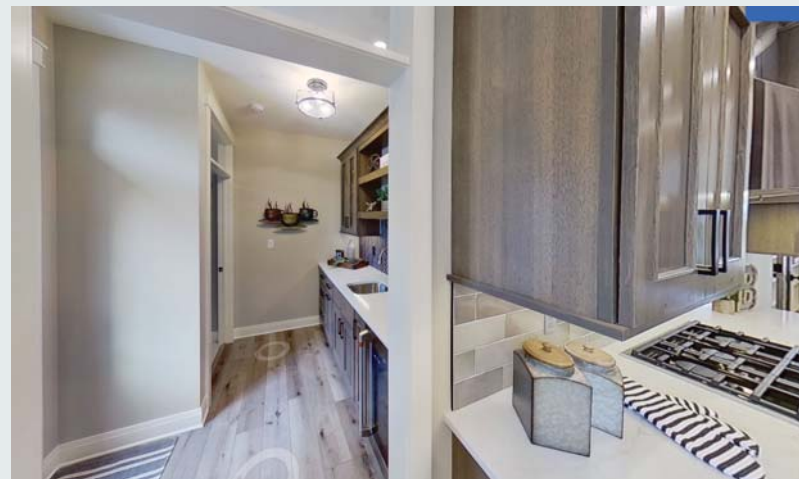
Sales Professional:



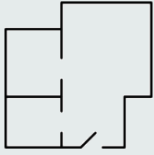
Introducing the 2024 Designed Crestwood a split bedroom ranch, offering a generous 2,600 square feet of luxurious living space. As you step into the home, a stunning foyer welcomes you, leading seamlessly into the spacious great room, bayed dinette, and highly functional kitchen. With its 10-foot ceilings and transom windows, the main living area is bathed in abundant natural light, creating an inviting and airy atmosphere. The well-appointed kitchen boasts a walk-in pantry and a central island, providing a gathering place for family members to enjoy meals or engage in conversations with the designated cook.

Indulge in the opulent Master Suite, featuring a tray ceiling, a deluxe bath, and an expansive walk-in closet, creating a tranquil and private retreat within the home. On the opposite side of the residence, two generously sized bedrooms await, accompanied by another full bath. For added convenience, a mudroom and laundry room are thoughtfully situated off the garage, catering to the demands of today's active lifestyle.

This meticulously designed split bedroom ranch showcases elegance and functionality, offering a comfortable and sophisticated living experience for its fortunate occupants.



# The Crestwood



2,607 Sq.Ft.



2-3 BEDS



2.5 BATHS



Split Bedroom RANCH



SPECIAL FEATURES

Covered Porch  
Grill / Coffee Station

