

# The **Richmond**

1,601 Sq. Ft.



FRENCH COUNTRY ELEVATION

## Additional Elevation Styles



CLASSIC ELEVATION



TRADITIONAL ELEVATION

Visit us on the web at:

[www.JosephDouglasHomes.com](http://www.JosephDouglasHomes.com)

or Email us at: [sales@JosephDouglasHomes.com](mailto:sales@JosephDouglasHomes.com)

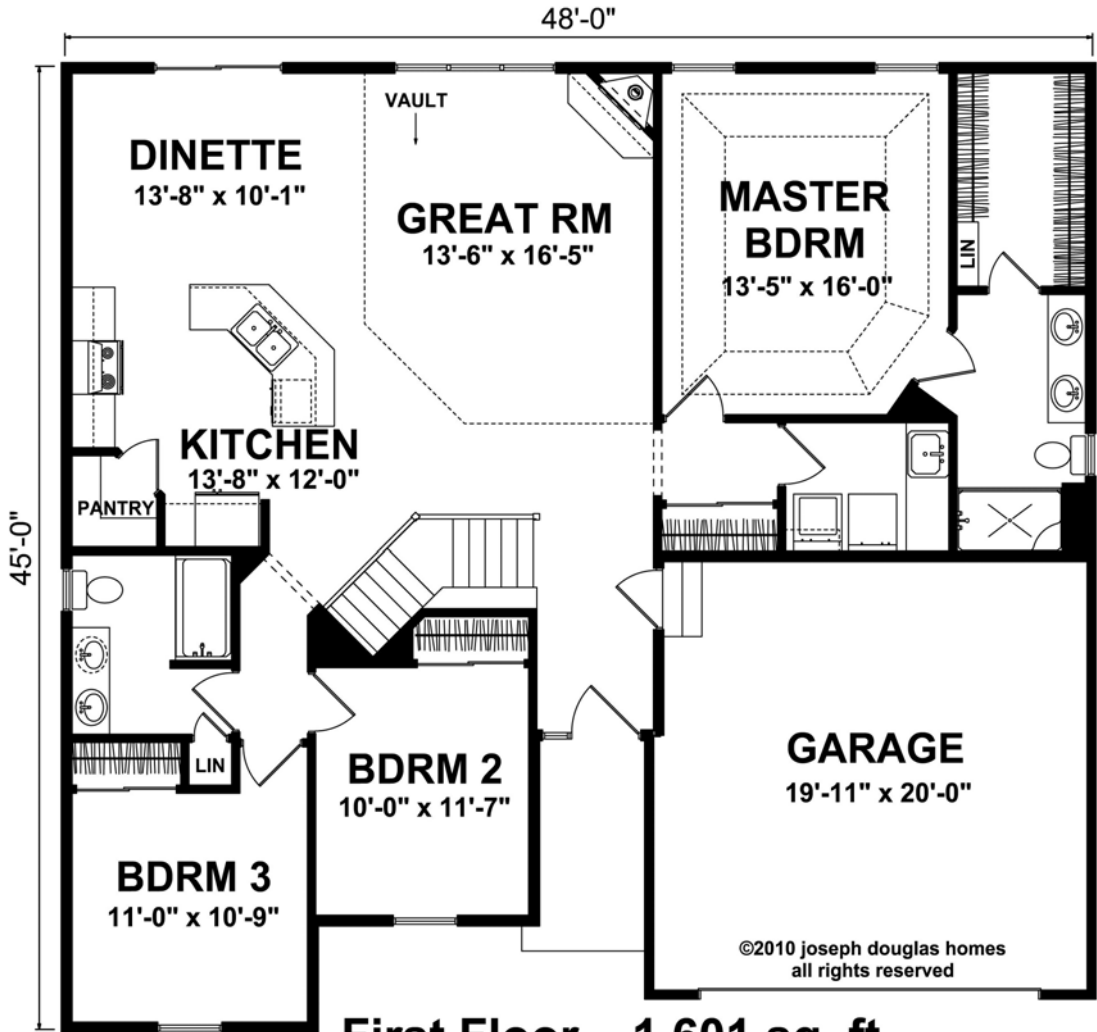
**(262)783-4700**

Joseph Douglas Homes • N50 W13740 Overview Dr. Suite D • Menomonee Falls, WI 53051

The front elevation shown above is an artist's rendering and for illustrative purposes only. All floor plans, exterior renderings and dimensions are approximate and subject to change. Standard floor plans and elevations may differ from those shown based on modifications, options and improvements. Contact salesperson for standard features. Prices and specifications are subject to change without notice or obligation.

# The Richmond

1,601 Sq. Ft.



First Floor 1,601 sq. ft.

For more information, call:



N50 W13740 Overview Dr. Suite D  
Menomonee Falls, WI 53051  
[www.JosephDouglasHomes.com](http://www.JosephDouglasHomes.com)  
**(262)783-4700**