

The **Aberdeen**

2,536 Sq. Ft.



CRAFTSMAN ELEVATION

Visit us on the web at:

www.JosephDouglasHomes.com

or Email us at: sales@JosephDouglasHomes.com

(262)783-4700

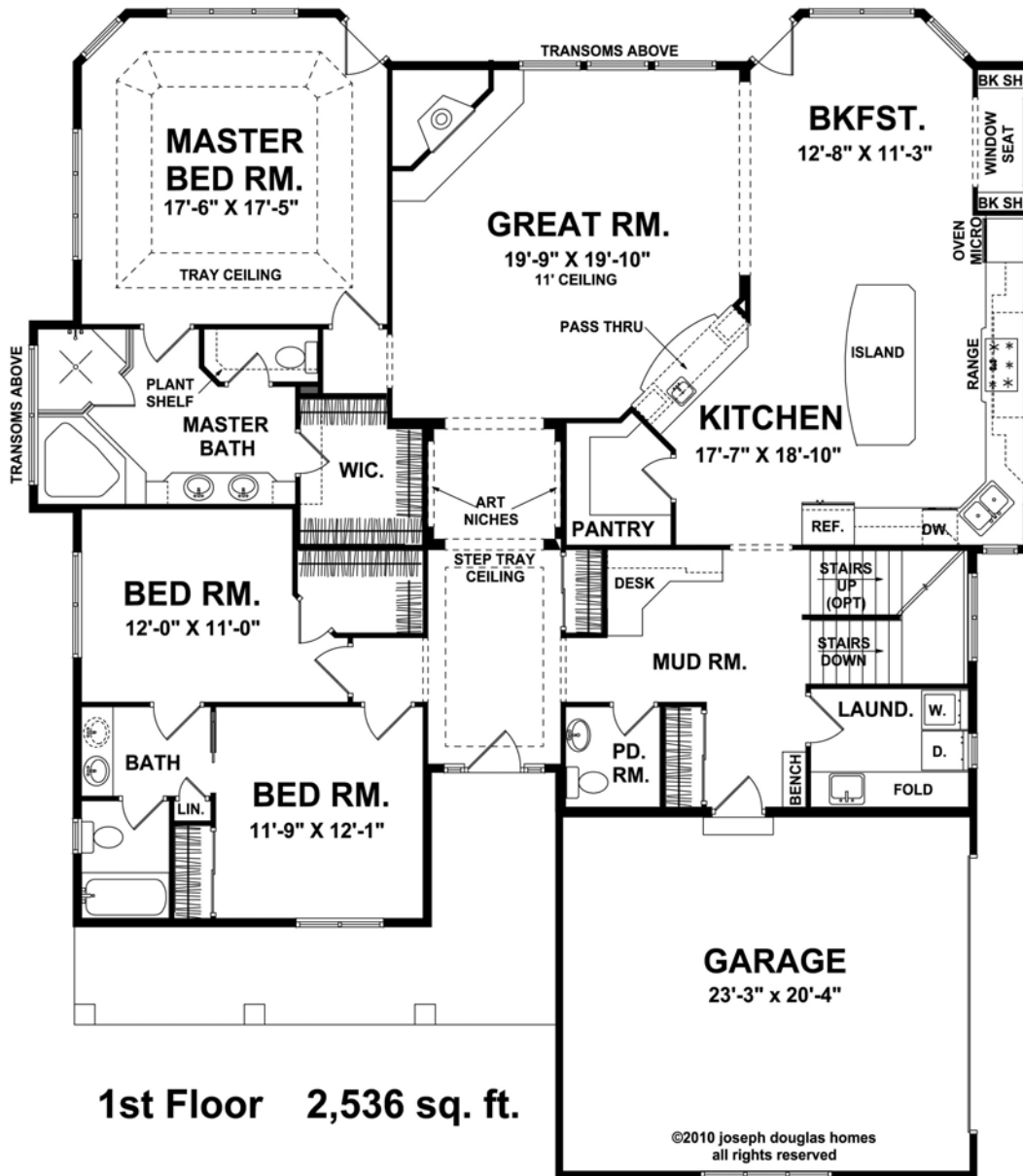
Joseph Douglas Homes • N50 W13740 Overview Dr. Suite D • Menomonee Falls, WI 53051

The front elevation shown above is an artist's rendering and for illustrative purposes only. All floor plans, exterior renderings and dimensions are approximate and subject to change. Standard floor plans and elevations may differ from those shown based on modifications, options and improvements. Contact salesperson for standard features.

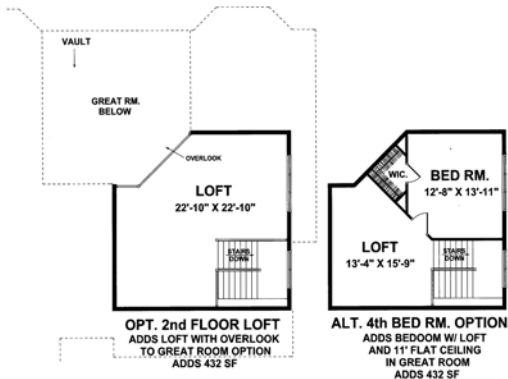
Prices and specifications are subject to change without notice or obligation.

The Aberdeen

2,536 Sq. Ft.



Popular Options



For more information, call:



N50 W13740 Overview Dr. Suite D
Menomonee Falls, WI 53051

www.JosephDouglasHomes.com

(262)783-4700